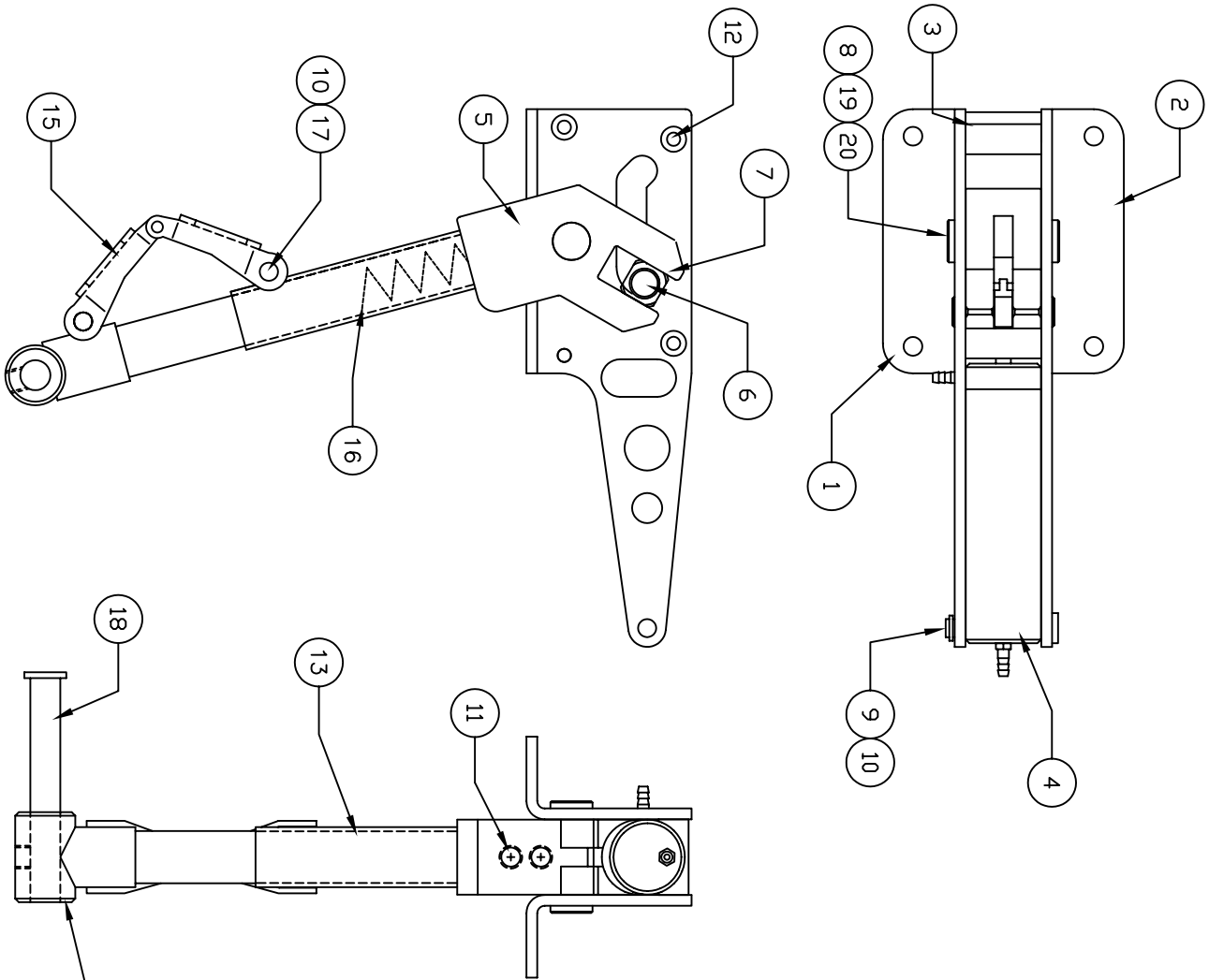


\*\* THIS IS YOUR SPARE PARTS LIST. SAVE FOR FUTURE REFERENCE, ORDER BY PART NUMBER. CURRENT PRICES WILL BE QUOTED.\*\*



906-171M

FACTORY REPAIR FEE= \$25.00 PLUS PARTS

## SPARE PARTS LIST

QTY	ITEM	DESCRIPTION	ASS'Y/PART #
1	1	SIDE FRAME (LH)	630-055M
1	2	SIDE FRAME (RH)	630-056M
3	3	FRAME SPACER	630-005M
1	4	CYLINDER ASSEMBLY	630-102A
1	5	TRUNION (THRU HOLE)	630-003M
1	6	CAM PIN	630-012M
2	7	CAM FOLLOWER	630-011M
2	8	TRUNION BOLT	630-006M
1	9	CLEVIS PIN	150-012M
3	10	RETAINING RING	1039F
2	11	#10-32 SET SCREW	1077F
6	12	#4-40 x 1/4" PPHMS	1047F
1	13	STRUT WELDMENT	WB17-102A
1	14	OLEO RAM WELDMENT	WB17-103A
1	15	TORQUE LINK ASSEMBLY	620-112A
1	16	SPRING 6 3/8" LONG	150-019P
2	17	CLEVIS PIN	620-012M
1	18	AXLE BAG ASSEMBLY	145-142A
1	19	TRUNION PIN **	630-333M
2	20	PIN RETAINING RING **	1132F

\*\* USED FOR NEW STYLE  
NOTE WHICH STYLE WHEN ORDERING



CHK'D BY \_\_\_\_\_

DRAWN BY J. REHAK

DATE 7-26-02

MODEL No. W/B-17

**robot**  
www.robot.com

MFG. INC.  
625 N. 12TH ST.  
ST. CHARLES, IL  
(630)584-7616

TITLE  
WING B-17 MAIN GEAR